



# 7<sup>th</sup> Annual Johns Hopkins University Go Tournament



Saturday June 21, 2008

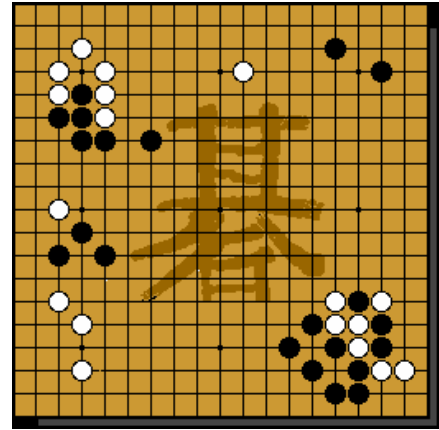
9:00 am - 6:00 pm

Registration by email and in person: 9-10:00 am

This is an AGA-rated tournament!

Location: Rooms 160, 161 and 162 in the Mattin Center on the Homewood Campus (just south of the library, at about 3200 N Charles Street). This is the second building on the left when you are entering from the street (the entrance with the statue).

[http://web.jhu.edu/studentprograms/homewood\\_arts/mattin.html](http://web.jhu.edu/studentprograms/homewood_arts/mattin.html)



Play: There will be four rounds at 45 minutes per player, and 3 byo-yomi (overtime) periods of 30 seconds each. American Go Association (AGA) rules. Games will be appropriately handicapped and rated. Players will be divided into sections so as to keep handicaps to a minimum.

Prizes: There will be cash prizes for all divisions!

Cost: \$15 dollars. \$10 for 1 year full youth membership, \$30 promotional for new 1 year full membership (over 23), \$10 for single event membership (no Yearbook or full e-journal)

Equipment: Please let us know if you have any extra gobans(boards), stones, and clocks available.

Parking: Faculty parking is open during the weekend (for a minimal fee), and there is street parking as well along North Charles, Art Museum Drive, and Wyman Park Drive. Most parking is mostly unregulated on the weekend, so look for signs.

Registration: Please email [jhu\\_go@yahoo.com](mailto:jhu_go@yahoo.com) to pre-register, if you plan to attend, or if you plan to facilitate the attendance of others.

Lunch: There are a number of food places within a 3 minute walk from the tournament site, and we will be available to help with directions.

If you have any questions please contact:

[jhu\\_go@yahoo.com](mailto:jhu_go@yahoo.com)

Hosted by the Johns Hopkins Go Club